

Appendix C

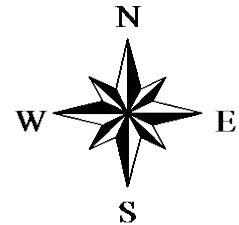
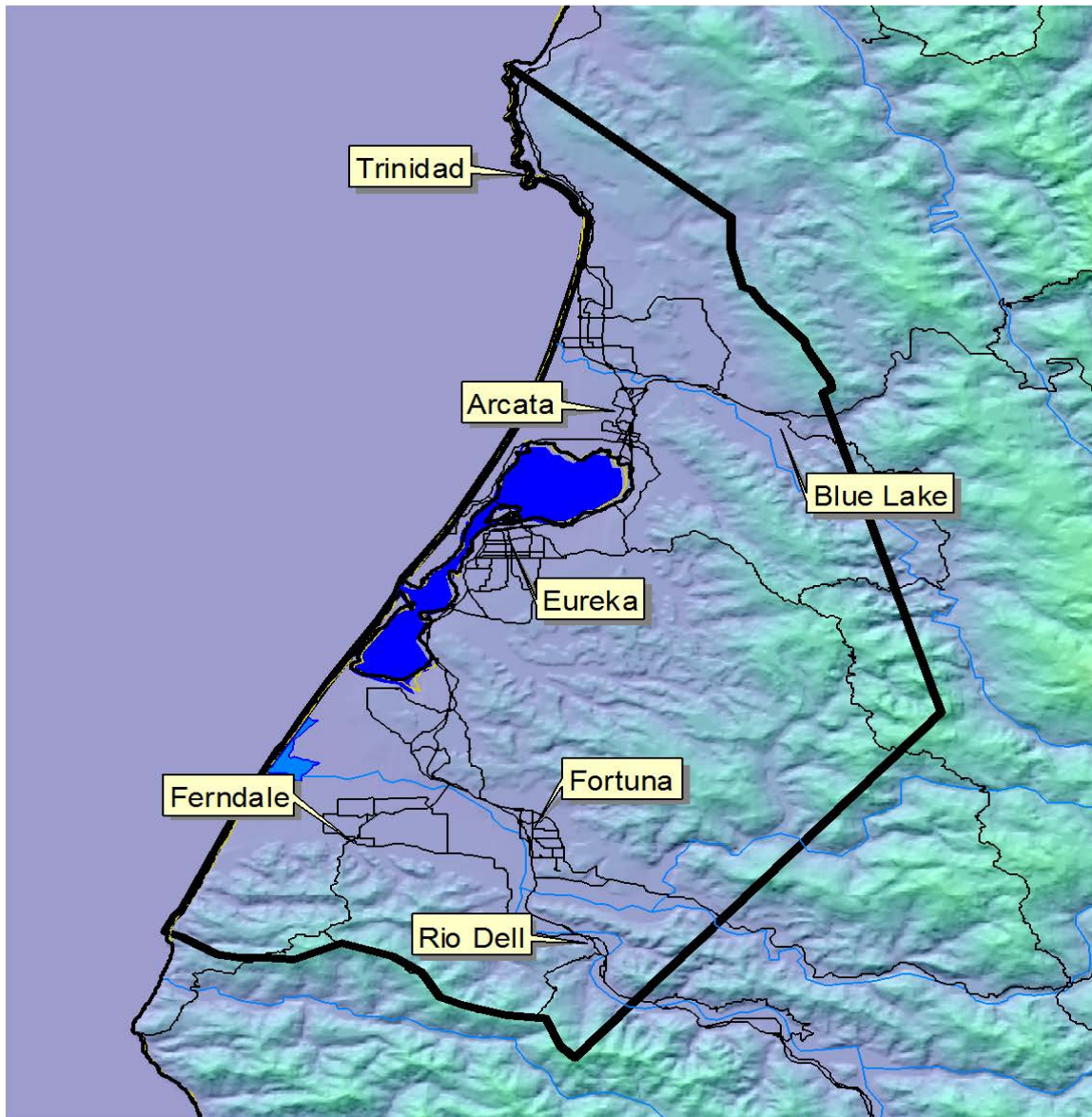
Humboldt Bay Air Basin

The content of this Appendix was first adopted in 2006.
The current version was adopted by the Governing Board via Resolution 2015-10 on September 10, 2015.

TABLE OF CONTENTS

HUMBOLDT BAY AIR BASIN MAP

Humboldt Bay Air Basin



For use in these Rules and Regulations, the Humboldt Bay Air Basin shall be defined as all those portions of Humboldt County: bounded on the west by the Pacific Ocean; bounded on the north and east by a line extending from Rocky Point, six miles north of Trinidad, to the junction of Little River and the Lower South Fork of Little River; thence due south to Tip Top Ridge; thence southeasterly along Tip Top Ridge to the southernmost summit of Tip Top Ridge north of Korbel, thence southeasterly along a line extending from the southernmost point of Tip Top Ridge to a lookout station at Iaquia Buttes; bounded on the south and east by a straight line extending from the lookout station at Iaquia Buttes to the Mt. Pierce lookout station south of Scotia; bounded on the south by a line following along the crest of the Bear River Ridge from the Mt. Pierce lookout station to the Pacific Ocean.